

CONTROL
FRESH
EFFECTIVENESS

MATRIX DUPLEX - Halve your production time

The Matrix Duplex laminates both sides of the printed sheet at the same time speeding up the production process.

The Duplex can laminate single-sided, double-sided and supports foils and spot UV effects. Designed and produced in Britain to keep supply chains and lead times to a minimum. High quality components are used, including SMC pneumatics, Omron switches and Schneider electrics to build in reliability.



▲ MX-530DP



MATRIX OMNI-FLOW
Deep Pile Feeder

Matrix® Omni-Flow - a fully automated deep pile feeder and part of the modular Matrix system, that is quick and easy to install, set-up and operate.

The Feeder can be fitted to all Matrix Pneumatic & Duplex models.

Up to a 180mm/7-inch pile of printed media can be loaded at a time. That's 700 sheets of 250gsm/170lbs paper with quick and easy re-loading.

The Matrix Omni-Flow also supports long sheet prints, up to 1075mm/42-inches in length. Ideal for both the Digital and Commercial markets for short-to-medium run lamination and foiling of business cards, menus, book covers, greetings cards and bespoke prints.



▲ MX-370P with Omni-Flow Deep Pile Feeder



▲ Omni-Flow Deep Pile Feeder

CONSUMABLES
A complete range of films, foils and spot UV Supplies



- Gloss OPP film
- Digital OPP film
- Soft touch OPP
- Printable gloss
- 3" core
- Matt OPP film
- Bio-degradable OPP
- Matt anti-scratch
- Printable matt
- 1000m/3281ft rolls

“ This Boss film is better than any other laminate we've ever used and such good value-for-money; you are literally talking pence per sheet on the laminate.”



The range of Aqua Aura foils have been tested for use in the Matrix Pneumatic and Duplex Systems.

Precision control of both the temperature and pressure ensure consistent high quality results.

- Silver • Matt silver
- Gold • Matt gold
- Rose gold • Copper
- White • Gloss spot UV • Pink • Red
- Green • Blue
- Rainbow holographic
- Glitter holographic
- Cracked ice



MATRIX LAMINATING SYSTEMS



EASYMOUNT WIDE FORMAT SYSTEMS



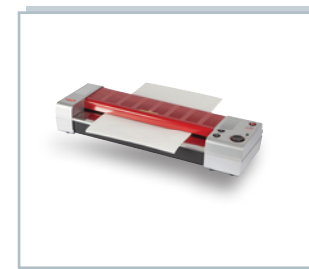
MAGNUM CUT/CREASE/PERF/FOLD SYSTEMS



MAGNUM BINDING SYSTEMS



LINEA ENCAPSULATION SYSTEMS



PEAK POUCH LAMINATING SYSTEMS



TRIMFAST TRIMMING & CUTTING SYSTEMS



BOSS FILM / AQUA AURA FOIL SUPPLIES

Vivid design and manufacture a wide range of laminating systems, specialising in function, style and reliability.

We have been leading the field with our innovative product development for over 30 years, successfully building our brands and customer relationships. So, if you're looking to improve your in-house finishing capability start by calling Vivid.

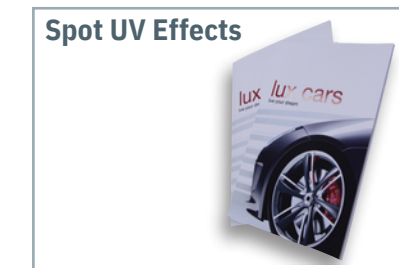


CDMX: 55 53934917
QUERETARO: 442 606 5169
WHATS : 442 6066159
info@enfoquedi.com.mx
www.enfoquedi.com.mx



ENFOQUE DIGITAL GRAFICO

MATRIX® AWARD-WINNING MODULAR SYSTEMS FOR LAMINATION, FOILING & SPOT UV EFFECTS.



QUALITY

RELIABILITY

INNOVATION

DESIGN

SUPPORT

EASE

PERFORMANCE

SPEED

The Matrix Foiling, Laminating and Spot UV Effects System - winner of Quick Printing Readers' Choice Top Products Award in the U.S.

The best value single and double-sided laminators on the market; they're simple to use, easy to maintain, quick and reliable. Designed as a modular system that can grow with your business

The Matrix allows you to bring lamination, foiling and spot UV type effects in-house, expanding the range of services on offer and reducing the cost and hassle of outsourcing.



▲ MX-370P

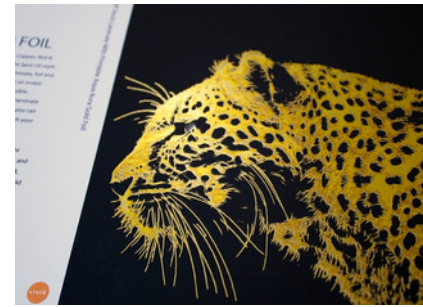


Create Foil and Spot UV Effects On-Demand

Special finishing effects, typically used on packaging, business cards, stationery, book covers, security print, wedding stationery and high end, bespoke print jobs, give prints that extra 'wow' factor.

An optional take-up unit that sits at the rear of the Matrix allows the modular Pneumatic & Duplex Systems to be used to create beautifully finished work using foils and spot UV-style effects. The precise temperature and pressure control make such effects easily achievable without the need for traditional custom-made blocks or dies

With foils available in over 20 colours including White, Silver, Gold, Copper, Red & Blue and a Clear Gloss Film to create Spot UV-style finishes. Using just one system to laminate, foil and Spot UV offers a greater return on investment, as multiple applications are possible. More colours are available on request.



▲ On-demand foil and spot UV effects are simple and cost-effective on the Matrix



MATRIX A modular system designed to grow with your business

Cost-effective

Matrix systems are incredibly cost-effective, meaning you can now truly offer a one-stop shop for your customers.

Avoid the costly trips, set-up charges and delays of outsourcing to a print finisher. Increase the services you offer, reduce your expenses and take control of the job from start-to-finish.

The Matrix offers an ideal investment in finishing for your digital print work – on demand – for brochures, folders, business cards and much more besides.

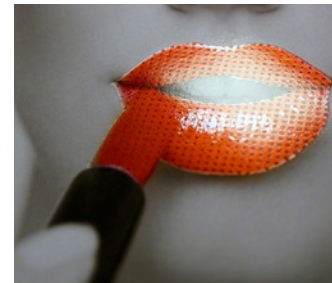
Beautifully simple, reliably robust

Matrix foil and laminating systems are reliable, simple to use and capable of returning much more than your investment.

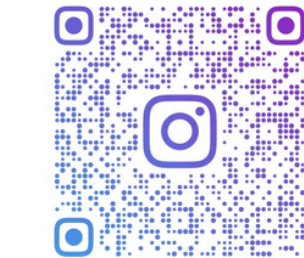
Designed and manufactured in-house, we ensure that everything about them is aimed at helping you to do your job more efficiently whilst offering a wider range of in-house services to your customer.

Faster production

Pneumatic systems can run at up to twice the speed, allowing printers to produce work even faster and get the job finished and back to the customer.



▲ Stunning spot UV type effects are simple to set-up on the Matrix



ENFOQUEDIGITALGRAFICO



▲ MX-370MP

The Matrix Metallic™ MX-370MP Enables Digital Foil and Spot UV Type Effects on Wider Range of Papers.

The Matrix Metallic™ has been designed specifically for applying digital foils and spot-UV type effects easily and economically to a wide range of paper stocks.

Like its Matrix stablemates, the Matrix Metallic™ features pneumatic rollers with thermostatic temperature control. The easy to operate Metallic™ has been fully optimised to work better with non-smooth papers, widening the choice of creative papers that can be used with digital foiling.

The 20m/minute MX-530PS shown here with retrofitable Omni-Flow Deep Pile Feeder



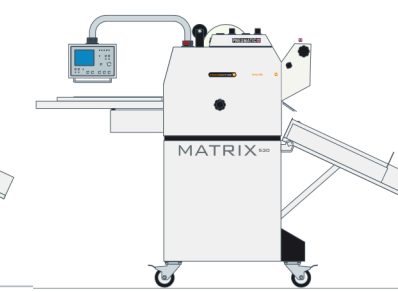
Key features

	MX-370	MX-530	MX-370P	MX-530P	MX-370DP	MX-530DP	MX-530PS	MX-370MP
Semi-Automated Feed	•	•	•	•	•	•	•	•
Automatic Sheet Register and Overlap	•	•	•	•	•	•	•	•
Automatic Separation	•	•	•	•	•	•	•	•
Film Perforator	•	•	•	•	•	•	•	•
3-Core	•	•	•	•	•	•	•	•
Anti-Curl Bar	•	•	•	•	•	•	•	•
Single-Sided Lamination	•	•	•	•	•	•	•	•
Encapsulation / Double-Sided Lamination	-	-	-	-	•	•	-	-
Collection Tray for Finished Prints	•	•	•	•	•	•	•	•
Pneumatic Roller Pressure	-	-	•	•	•	•	•	•

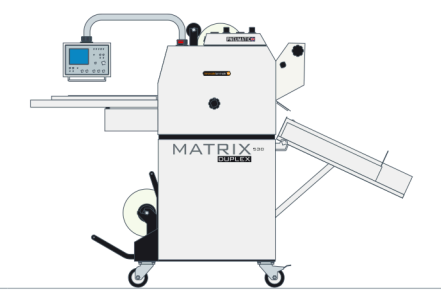
• Yes - No
○ Optional



▲ MX-370/530



▲ MX-370P/530P



▲ MX-370DP/530DP

Specifications

	MX-370	MX-530	MX-370P	MX-530P	MX-370DP	MX-530DP	MX-530PS	MX-370MP
Max. Mechanical Speed (m/ft)	10/33	10/33	10/33	10/33	10/33	10/33	20/66	10/33
Max. Lamination Film Width (mm/inches)	375/15	510/20	340/13	510/20	340/13	510/20	510/20	340/13
Min. Paper Thickness - Single-sided (gsm/lbs)	135+/90+						0	3
Min. Paper Thickness - Double-sided (gsm/lbs)						100+/70+		
Maximum Sheet Width (mm/inches)	420/17	550/22	420/17	550/22	420/17	550/22	550/22	420/17
Warm-up Time (mins)	10	10	10	10	10	10	10	10
Temperature Range (°C/°F)	0-140/32-284							
Power Supply (V)	220/240							
Power Supply Required (Amps)	13	13	13	13	32	32	13	
Power Consumption (W)	2200	2400	2200	2400	4500	4500	2200	
Dimensions - Width (mm/inches)	800/31	900/35	800/31	900/35	800/31	900/35	900/35	800/31
Dimensions - Depth x Height (mm/inches)	1800x1400	2050x1400	1800x1400	2050x1400	1800x1400	2050x1400	2050x1400	1800x1400
Gross Machine Weight (kg/lbs)	190/419	220/485	210/463	240/529	220/485	250/551	275/605	210/463
Warranty		1 year						

Accessories

	MX-370	MX-530	MX-370P	MX-530P	MX-370DP	MX-530DP	MX-530PS	MX-370MP
Stand	S	S	S	S	S	S	S	S
Auto-Feeder	-	-	•	•	•	•	•	•
Take-Up Unit	•	•	•	•	•	•	•	•
Flatbook	•	•	•	•	•	•	•	•
Film Slitter	•	•	•	•	•	•	•	•
Film Perforating	S	S	S	S	S	S	S	S
System Ultra-Quiet	-	-	•	•	•	•	•	•

Compressor

• Yes - No S Standard



Enfoque Digital

CDMX: 55 53934917
QUERETARO: 442 606 5169
WHATS : 442 6066159
info@enfoquedi.com.mx
www.enfoquedi.com.mx

